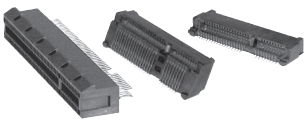


It is Adam Tech's continuing goal to offer a wide range of world class connectors and cable assemblies with one simple promise: We will provide you with the Highest Quality Product with the Best Service Available at the Lowest Possible Price. Adam Tech has a professionally staffed sales team at our corporate headquarters in Union, New Jersey, USA which is fully stocked with many of our standard products

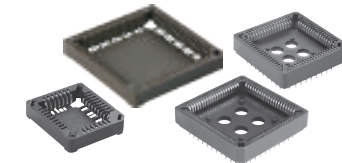
PCI EXPRESS, MINI PCI EXPRESS, MINI PCI, VESA & EISA

- 2.54, 1.27, 1.0 & 0.8mm Pitch
- Standard and Hi density versions
- x1, x4, x8 & x16 Lane configurations
- Coexists with Standard PCI
- Hot Plug & Hot Swap Enabled



PLCC SOCKETS

- Full range 20p – 100p
- Precision Stamped contacts
- Thru-hole and SMT types
- Standard and Hi-Temp versions



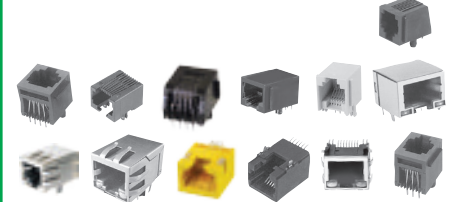
POGO PIN CONNECTORS

- High Reliability
- Corrects connection between uneven surfaces
- Satisfies high vibration connection requirements
- Increased durability for heavy duty applications
- Highly Customizable
- Low Cost and Easily Integrated

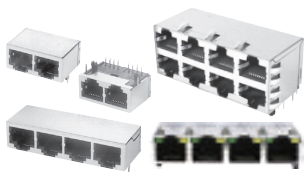


MODULAR JACKS

- 4, 6, 8 & 10 Positions, Thru-hole, SMT, Right Angle, Vertical, Ganged, Stacked, Integrated Magnetics



MODULAR JACKS, GANGED & STACKED



MODULAR JACKS WITH INTEGRATED MAGNETICS & LEDS

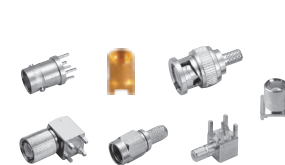
- Single, stacked & ganged configurations
- Choice of transformer styles
- Panel grounds & LED options



Combination Mod Jack & Dual USB with Integrated Magnetics

RF CONNECTORS

- Wide selection of cable, panel mount & PCB connectors
- BNC, TNC, FMA, FME, SMA, SMB, N, F PAL, Mini-UHF, MCX, MMCX, W.F.L & 1.6/5.6



SMALL FORM FACTOR

- Industry Standard Compatibility.
- Interfaces with both fiber optic and copper networking modules.
- Single, Stacked or Ganged Cages.



D-SUBMINIATURE IDC- FLAT CABLE C

- Positions: 9, 15, 25, 37, 50
- Compatible with all industry standard D-Subs
- Quickly terminates to 1.27 Flat Cable



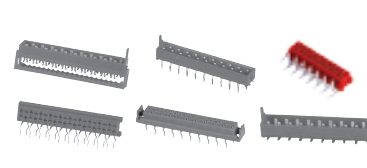
WATERPROOF CONNECTORS

- Panel Mount, Overmold w/ Cable, Field Assembly Types
- Complete Pin Count Selection
- IP Sealing Options include IP66, IP67, IP68
- Straight and Right Angle
- Screw Locking Mechanisms



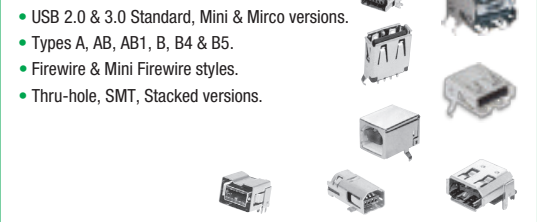
MINI FLEX CONNECTOR

- 1.27 (.050") Pitch
- Cable-PCB, Wire-PCB, PCB-PCB Styles
- Superior design with Location Pegs & Friction Lock Mating



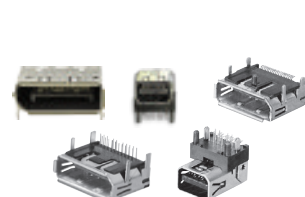
USB, MINI-USB, MICRO USB & FIREWIRE, MINI-FIREWIRE

- USB 2.0 & 3.0 Standard, Mini & Micro versions.
- Types A, AB, AB1, B, B4 & B5.
- Firewire & Mini Firewire styles.
- Thru-hole, SMT, Stacked versions.



DISPLAY PORT & MINI-DISPLAY PORT

- High band width digital interface.
- Small package, shielded design.
- Supports color depth 6,8,10,12, 16 bits per color components.



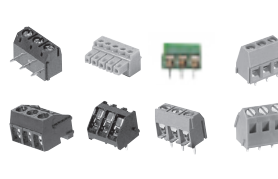
HDMI & MINI HDMI SERIES

- Standard or Mini types, Sturdy, Fully Shielded.
- Eliminates multiple connectors and cables.
- Up to 5Gbps in single interface.
- Thru-hole or SMT mount, Flange mounting option.



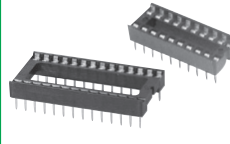
EURO BLOCKS

- Multiple sizes and profiles
- Top, Side and Angled entry
- Two piece pluggable versions
- 3.5, 3.81, 5.0, 5.08, 7.0, 7.62, 10.0, 10.16, 15.0mm Pitches



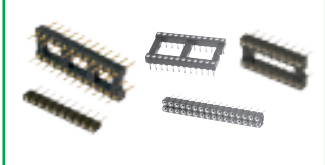
IC SOCKETS

- High Pressure contact system
- 7.62 (.300") or 15.24 (.600") Centerline Footprint
- 06P – 48P Positions
- Anti-Solder Wicking, Machine insertable



SCREW MACHINE SOCKETS & TERMINAL STRIPS

- 1.0, 1.27, 2.0 & 2.54mm Pitches
- High Pressure Contacts
- Single or Dual Row
- Straight, Right Angle and SMT mounting



DC CONNECTORS

- 1.27, 2.00, 2.54mm Pitches
- 8P – 100P
- Dual Row Sockets, PCB Plugs
- Card edge, D-Subminiatures



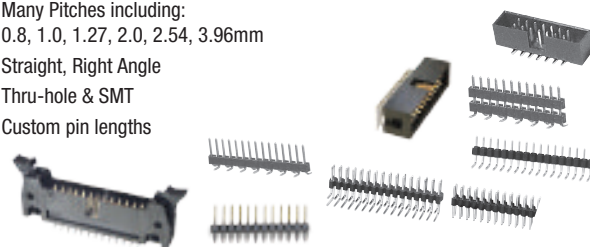
CUSTOM CABLE ASSEMBLIES

- 100% tested & guaranteed to customer requirements
- UL listed
- Many custom variations of industry-standard assemblies available



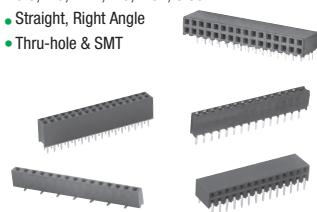
PIN HEADERS & SHROUDED HEADERS

- Many Pitches including:
0.8, 1.0, 1.27, 2.0, 2.54, 3.96mm
- Straight, Right Angle
- Thru-hole & SMT
- Custom pin lengths



RECEPTACLE STRIPS

- Many Pitches including:
0.8, 1.0, 1.27, 2.0, 2.54, 3.96mm
- Straight, Right Angle
- Thru-hole & SMT



HEADER & HOUSING SYSTEMS

- 0.8, 1.0, 1.25, 1.5, 2.0, 2.5 & 2.54mm Pitches
- Straight, Right Angle and SMT styles
- Sure fit, Fine Pitched & Polarized



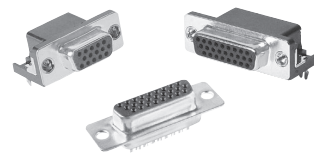
TERMINAL BLOCKS

- Wide range of sizes and profiles
- Choice of multiple terminations
- 02 – 30 positions



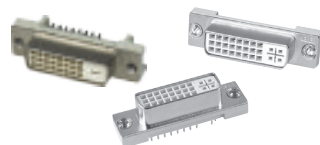
HIGH DENSITY D-SUBS

- Positions: 15, 26, 44, 62, 78
- High Density pin count in standard size shell
- Straight, Right Angle, Solder Cup, Crimp/Poke variations



DVI CONNECTOR

- Digital & Analog versions.
- Straight and Right Angle PCB mount.
- High Speed performance and low cost.
- Single or Dual Stacked.



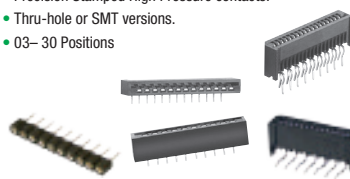
AC INLET & OUTLET POWER CONNECTORS

- Solder, Quick connect or PCB pin mount
- Inlet & Outlets with Power Line Filters
- Snap in or Screw in Flange Mount
- Fuse & Fuse with Switch versions
- IEC & Mini-IEC types
- IEC-60320, CEE-22 Compliant



FLEX CIRCUIT CONNECTOR – LIF TYPE

- 0.3, 0.5, 0.8, 1.0 & 1.25mm Pitches.
- LIF and ZIF types.
- Precision Stamped High Pressure contacts.
- Thru-hole or SMT versions.
- 03– 30 Positions



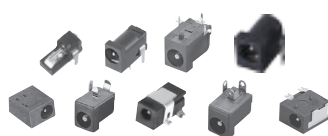
FLEX CIRCUIT CONNECTOR – ZIF TYPE

- 0.3, 0.5, 0.8, 1.0 & 1.25mm Pitches.
- LIF and ZIF types.
- Precision Stamped High Pressure contacts.
- Thru-hole or SMT versions.
- 03– 30 Positions



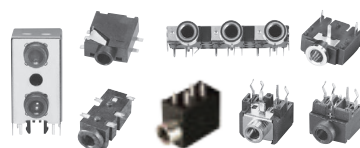
DC POWER JACKS

- Miniature & Sub-Miniature.
- PCB and panel mounting versions.
- Wide range of center pin sizes.
- Thru-hole or SMT mounting.



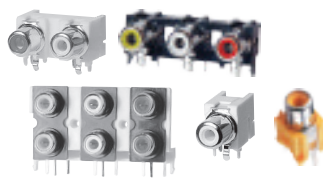
AUDIO JACKS

- Miniature & Sub-Miniature styles
- Broad range of switching configurations
- Ganged and Stacked versions
- PCB or panel mounting types
- Thru-hole or SMT mounting



RCA JACKS

- Wide range of body styles
- Ganged and Stacked versions
- Industry standard compatibility



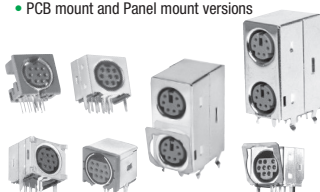
DIN JACKS

- Wide range of styles
- 3 – 13 positions
- Shielded or Unshielded
- PCB mount and Panel mount versions



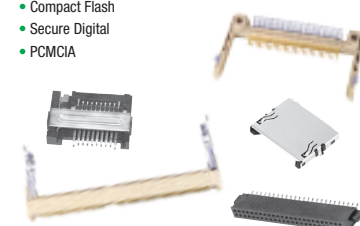
MINI DIN JACKS

- Wide range of styles
- 3 – 13 positions
- Shielded or Unshielded
- PCB mount and Panel mount versions



MEMORY CONNECTORS

- Memory Sticks
- Smart Media
- Compact Flash
- Secure Digital
- PCMCIA



SATA SERIES

- Meets SCA Interconnection Standards.
- Hot Plug capability with power and signal contacts.
- Single and top/bottom or side/side ports.
- Shielded, Open Frame, Thru-hole & SMT styles.



DIN 41612

- Industry standard compatible
- Multiple body sizes and types
- 16 – 96 positions
- 2, 3 & 4 Row styles

