

# SRAM Product Portfolio

#	Part Number	Organization	Vcc	Speed	Pin	Package	CE	MPQ / pcs	
1	CS18LV02563ACR55/70	32Kx8	2.7~3.6V	55/70ns	28	SOP	Single	1 Tube = 25	<b>256K</b>
2	CS18LV02563BCR55/70	32Kx8	2.7~3.6V	55/70ns	28	TSOP-I	Single	1 Tray = 234	
3	CS18LV02563PCR55/70	32Kx8	2.7~3.6V	55/70ns	28	PDIP	Single	1 Tube = 15	
4	CS18LV02565ACR55/70	32Kx8	4.5~5.5V	55/70ns	28	SOP	Single	1 Tube = 25	
5	CS18LV02565BCR55/70	32Kx8	4.5~5.5V	55/70ns	28	TSOP-I	Single	1 Tray = 234	
6	CS18LV02565PCR55/70	32Kx8	4.5~5.5V	55/70ns	28	PDIP	Single	1 Tube = 15	
1	CS18LV10243CCR55/70	128Kx8	2.7~3.6V	55/70ns	32	SOP	Dual	1 Tube = 22	<b>1M</b>
2	CS18LV10243DCR55/70	128Kx8	2.7~3.6V	55/70ns	32	TSSOP	Dual	1 Tray = 234	
3	CS18LV10243ECR55/70	128Kx8	2.7~3.6V	55/70ns	32	TSOP-I	Dual	1 Tray = 156	
4	CS16LV10243GCR55/70	64Kx16	2.7~3.6V	55/70ns	44	TSOP-II	Single	1 Tray = 135	
5	CS18LV10245CCR55/70	128Kx8	4.5~5.5V	55/70ns	32	SOP	Dual	1 Tube = 22	
6	CS18LV10245DCR55/70	128Kx8	4.5~5.5V	55/70ns	32	STSOP	Dual	1 Tray = 234	
7	CS18LV10245ECR55/70	128Kx8	4.5~5.5V	55/70ns	32	TSOP-I	Dual	1 Tray = 156	
8	CS18LV10245LCR55/70	128Kx8	4.5~5.5V	55/70ns	32	PDIP/600mil	Dual	1 Tube = 13	
1	CS18LV20483ACCR55/70	256Kx8	2.7~3.6V	55/70ns	32	SOP	Dual	1 Tube 22	<b>2M</b>
2	CS18LV20483ADCR55/70	256Kx8	2.7~3.6V	55/70ns	32	STSOP	Dual	1 Tray 234	
3	CS18LV20483AECR55/70	256Kx8	2.7~3.6V	55/70ns	32	TSOP-I	Dual	1 Tray 156	
4	CS16LV20483AGCR55/70	128Kx16	2.7~3.6V	55/70ns	44	TSOP-II	Single	1 Tray 135	
5	CS16LV20493AGCR55/70	128Kx16	2.7~3.6V	55/70ns	44	TSOP-II	Dual	1 Tray 135	
1	CS18LV40963CCR55/70	512Kx8	2.7~3.6V	55/70ns	32	SOP	Single	1 Tube 22	<b>4M</b>
2	CS18LV40963DCR55/70	512Kx8	2.7~3.6V	55/70ns	32	STSOP	Single	1 Tray 234	
3	CS18LV40963ECR55/70	512Kx8	2.7~3.6V	55/70ns	32	TSOP-I	Single	1 Tray 156	
4	CS18LV40963FCR55/70	512Kx8	2.7~3.6V	55/70ns	32	TSOP-II	Single	1 Tray 117	
5	CS16LV40963GCR55/70	256Kx16	2.7~3.6V	55/70ns	44	TSOP-II	Single	1 Tray 135	
6	CS16LV40973GCR55/70	256Kx16	2.7~3.6V	55/70ns	44	TSOP-	Dual	1 Tray 135	
7	CS16LV40973UCP55/70	256Kx16	2.7~3.6V	55/70ns	48	BGA/6x7mm	Dual	1 Tray 364	
1	CS18LV81923AGCR55/70	1 Mx8	2.7 3.6V	55/70ns	44	TSOP-II	Dual	1Tray=135	<b>8M</b>
2	CS16LV81923BGCR55/70	512Kx16	2.7-3.6V	55/70ns	44	TSOP-II	Single	1Tray=135	



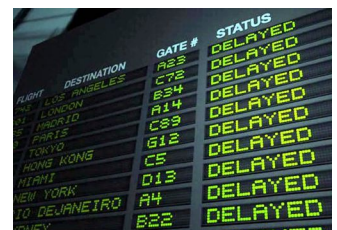
**POS Machine**



**Currency Count Machine**



**Thermal Imager**



**LED Control Panel**



**Industrial HMI**

#	Part Number	Organization	Vcc	Speed	Pin	Package	CE	MPQ / pcs	
1	CS18LV11253CCR45/55/70	128Kx8	2.7~3.6V	45/55/70ns	32	SOP	Dual	1 Tube = 22	<b>1M</b>
2	CS18LV11253DCR45/55/70	128Kx8	2.7~3.6V	45/55/70ns	32	STSOP	Dual	1Tray=234	
3	CS18LV11253ECR45/55/70	128Kx8	2.7~3.6V	45/55/70ns	32	TSOP-I	Dual	1Tray=156	
4	CS16LV11243GCR45/55/70	64Kx16	2.7~3.6V	45/55/70ns	44	TSOP-II	Single	1Tray=135	
5	CS18LV11255CCR45/55/70	128Kx8	4.5~5.5V	45/55/70ns	32	SOP	Dual	1Tube=22	
6	CS18LV11255DCR45/55/70	128Kx8	4.5~5.5V	45/55/70ns	32	STSOP	Dual	1Tray=234	
7	CS18LV11255ECR45/55/70	128Kx8	4.5~5.5V	45/55/70ns	32	TSOP-I	Dual	1Tray=156	
8	CS18LV11255LCR45/55/70	128Kx8	4.5~5.5V	45/55/70ns	32	PDIP	Dual	1Tube=13	
9	CS16LV11245GCR45/55/70	64Kx16	4.5~5.5V	45/55/70ns	44	TSOP-II	Single	1Tray=135	
1	CS18LV21493CCR45/55/70	256Kx8	2.7~3.6V	45/55/70ns	32	SOP	Dual	1Tube=22	<b>2M</b>
2	CS18LV21493DCR45/55/70	256Kx8	2.7~3.6V	45/55/70ns	32	STSOP	Dual	1Tray=234	
3	CS18LV21493ECR45/55/70	256Kx8	2.7~3.6V	45/55/70ns	32	TSOP-I	Dual	1Tray=156	
4	CS16LV21483GCR45/55/70	128Kx16	2.7~3.6V	45/55/70ns	44	TSOP-II	Single	1Tray=135	
5	CS16LV21493GCR45/55/70	128Kx16	2.7~3.6V	45/55/70ns	44	TSOP-II	Dual	1Tray=135	
6	CS18LV21495CCR45/55/70	256Kx8	4.5~5.5V	45/55/70ns	32	SOP	Dual	1Tube=22	
7	CS18LV21495DCR45/55/70	256Kx8	4.5~5.5V	45/55/70ns	32	STSOP	Dual	1Tray=234	
8	CS18LV21495ECR45/55/70	256Kx8	4.5~5.5V	45/55/70ns	32	TSOP-I	Dual	1Tray=156	
9	CS16LV21485GCR45/55/70	128Kx16	4.5~5.5V	45/55/70ns	44	TSOP-II	Single	1Tray=135	
1	CS18LV41963CCR45/55/70	512Kx8	2.7~3.6V	45/55/70ns	32	SOP	Single	1Tube=22	<b>4M</b>
2	CS18LV41963DCR45/55/70	512Kx8	2.7~3.6V	45/55/70ns	32	STSOP	Single	1Tray=234	
3	CS18LV41963ECR45/55/70	512Kx8	2.7~3.6V	45/55/70ns	32	TSOP-I	Single	1Tray=156	
4	CS18LV41963FCR45/55/70	512Kx8	2.7~3.6V	45/55/70ns	32	TSOP-II	Single	1Tray=117	
5	CS16LV41963GCR45/55/70	256Kx16	2.7~3.6V	45/55/70ns	44	TSOP-II	Single	1Tray=135	

Low Power SRAM

High Speed Super Low Power SRAM ( 90nm )

HS Super Low Power SRAM									4M	
	6	CS16LV41973GCR45/55/70	256Kx16	2.7~3.6V	45/55/70ns	44	TSOP-II	Dual		1Tray=135
	7	CS18LV41965CCR45/55/70	256Kx8	4.5~5.5V	45/55/70ns	32	SOP	Single		1Tube=22
	8	CS18LV41965DCR45/55/70	256Kx8	4.5~5.5V	45/55/70ns	32	STSOP	Single		1Tray=234
	9	CS18LV41965ECR45/55/70	256Kx8	4.5~5.5V	45/55/70ns	32	TSOP-I	Single		1Tray=156
	10	CS18LV41965FCR45/55/70	128Kx16	4.5~5.5V	45/55/70ns	32	TSOP-II	Single		1Tray=117
	11	CS18LV41965LCR45/55/70	128Kx16	4.5~5.5V	45/55/70ns	32	PDIP	Single		1Tube=13
	12	CS16LV41965GCR45/55/70	256Kx16	4.5~5.5V	45/55/70ns	44	TSOP-II	Single		1Tray=135
										8M
	1	CS18LV82933GCR45/55/70	1Mx8	2.7~3.6V	45/55/70ns	44	TSOP-II	Dual		
	2	CS16LV82923GCR45/55/70	512Kx16	2.7~3.6V	45/55/70ns	44	TSOP-II	Single		1Tray=135



Printer

PSEUDO SRAM	#	Part Number	Den. / Org.	Vcc	Speed	Pin	Package	CE	MPQ / pcs
	1	CS26LV16173HIP70	16M / 1Mx16	2.6~3.6V	70ns	48	BGA/6x8mm	Dual	1 Tray = 480
	2	CS26LV32173HIP70	32M / 2Mx16	2.7~3.6V	70ns	48	BGA/6x8mm	Dual	1 Tray = 480
	3	CS26LV64173AHIP70	64M / 4Mx16	2.7~3.6V	70ns	48	BGA/6x8mm	Dual	1 Tray = 480

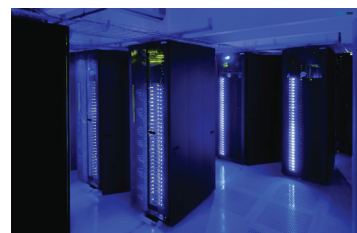


PLC Controller

Fast Speed SRAM									1M	
	1	CS16FS10243GC-10	64Kx16	3.0~3.6V	10ns	44	TSOP-II	Single		1 Tray = 96
	2	CS16FS1024WGC-10	64Kx16	1.8~3.6V	10ns	44	TSOP-II	Single		1 Tray = 96
	3	CS16FS1024WHC-10	64Kx16	1.8~3.6V	10ns	48	BGA/6x8mm	Single		1Tray=480
	4	CS16FS10245GC-10	64Kx16	4.5~5.5V	10ns	44	TSOP-II	Single	1Tray = 96	
									2M	
	1	CS18FS2048WGC-10	256Kx8	1.8~3.6V	10ns	44	TSOP-II	Single		1 Tray = 96
	2	CS16FS2048WGC-10	128Kx16	1.8~3.6V	10ns	44	TSOP-II	Single		1 Tray = 96
	3	CS16FS2048WHC-10	128Kx16	1.8~3.6V	10ns	48	BGA/6x8mm	Single		1Tray=480
	4	CS18FS20485GC-10	256Kx8	4.5~5.5V	10ns	44	TSOP-II	Single		1 Tray = 96
	5	CS16FS20485GC-10	128Kx16	4.5~5.5V	10ns	44	TSOP-II	Single	1 Tray = 96	
									4M	
	1	CS18FS4096WGC-10	512Kx8	1.8~3.6V	10ns	44	TSOP-II	Single		1 Tray = 96
	2	CS16FS4096WGC-10	256Kx16	1.8~3.6V	10ns	44	TSOP-II	Single		1 Tray = 96
	3	CS16FS4096WHC-10	256Kx16	1.8~3.6V	10ns	48	BGA/6x8mm	Single		1Tray=480
	4	CS18FS40965GC-10	512Kx8	4.5~5.5V	10ns	44	TSOP-II	Single		1 Tray = 96
	5	CS16FS40965GC-10	256Kx16	4.5~5.5V	10ns	44	TSOP-II	Single	1 Tray = 96	
									8M	
	1	CS18FS8192WGC-10	1Mx8	1.8~3.6V	10ns	44	TSOP-II	Single		1 Tray = 96
	2	CS16FS8192WGC-10	512Kx16	1.8~3.6V	10ns	44	TSOP-II	Single		1 Tray = 96
3	CS16FS8192WHC-10	512Kx16	1.8~3.6V	10ns	48	BGA/6x8mm	Single	1Tray=480		
4	CS18FS81925GC-10	1Mx8	4.5~5.5V	10ns	44	TSOP-II	Single	1 Tray = 96		
5	CS16FS81925GC-10	512Kx16	4.5~5.5V	10ns	44	TSOP-II	Single	1 Tray = 96		
								16M		
1	CS18FS1616WGC-10	2Mx8	1.8~3.6V	10ns	44	TSOP-II	Single		1 Tray = 96	
2	CS16FS1616WTC-10	1Mx16	1.8~3.6V	10ns	44	TSOP-II	Single		1 Tray = 96	
3	CS16FS1616WHC-10	1Mx16	1.8~3.6V	10ns	48	BGA/6x8mm	Single		1Tray=480	
4	CS18FS16165GC-10	2Mx8	4.5~5.5V	10ns	44	TSOP-II	Single		1 Tray = 96	
5	CS16FS16165TC-10	1Mx16	4.5~5.5V	10ns	44	TSOP-II	Single	1 Tray = 96		
								32M		
1	CS18FS3216WHC-10	4Mx8	2.5~3.3	10ns	48	BGA/6x8mm	Single		1Tray=480	
2	CS18FS3216WHC-15	4Mx8	1.8V	15ns	48	BGA/6x8mm	Single		1Tray=480	
3	CS16FS3216WHC-10	2Mx16	2.5~3.3	10ns	48	BGA/6x8mm	Single		1Tray=480	
4	CS16FS3216WHC-15	2Mx16	1.8V	15ns	48	BGA/6x8mm	Single	1Tray=480		



High-Speed Networking



High Performance Computing



Patient Monitoring